



RUB RAILS




TESSILMARE®



ABOUT US

MATE USA was developed thanks to the partnership between **Tessilmare** and **Marco**, two of the world's premier marine product suppliers.

Tessilmare is renowned for providing some of the most affordable, durable, and attractive ranges of rub rails anywhere in the world.

Founded in Italy in 1947, you know you're getting a high quality product, with a precision finish.

Marco produces and sells one of the most comprehensive ranges of pumps and horns available worldwide.

Founded in Italy in 1970, they supply products to international manufacturers in the marine, automotive, industrial and agricultural sectors using the most advanced technology and the highest International Quality Standards.

The international experience of both Italian companies is the base on which **MATE USA** built their ambitious distribution plan.

Through market research and global innovation, **MATE USA** is constantly growing and expanding to meet global demand.

MATE USA understands what it takes to be successful in a high-speed, online, global marketplace.

The company has been providing top of the line, affordable and durable marine products throughout the United States for almost 10 years.

As part of its ongoing commitment to excellence and product innovation, **MATE USA** has constantly been striving to upgrade its services and products. **MATE USA** has an ever-increasing number of partners and distributors across North America. They are also attending over 25 trade shows and exhibition shows this year.

MATE USA is structured for daily deliveries.

That means that when you order your products from **MATE USA**, they'll be on their way to you within 24-hours!



BINOX RUB RAIL

THE FIRST. BEYOND IMAGINATION.

The BinoX Stainless Steel 316 L Rub Rail is fitted without the use of unsightly screws and attachments.

One of the biggest drawbacks to any traditional Rub Rail is the installation process. The BinoX Rub Rail is set to revolutionize the Rub Rail industry around the world. There are no holes in the stainless-steel bar. It is pressure fitted into the base PVC allowing for a seamless and attractive finish.



HIGH RESISTANCE.
AND NO MORE RUST.



binox

THE FIRST STAINLESS STEEL RUB RAIL WITHOUT SCREWS.

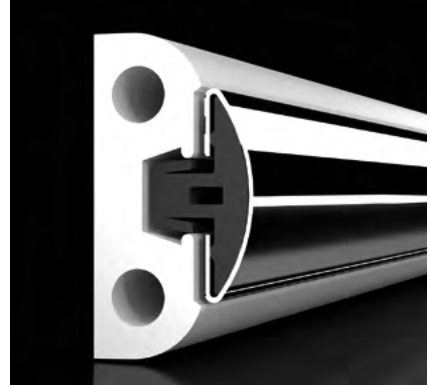
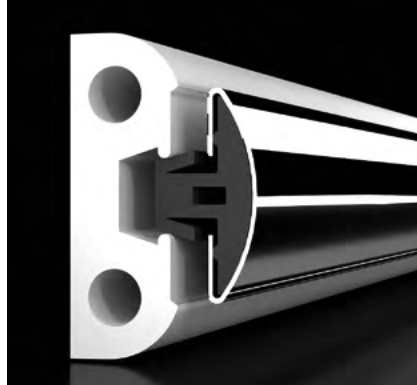
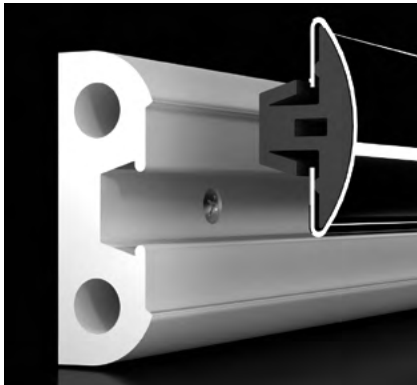
PATENTED

ENGINEERED BY Rezzonico Ranieri MADE BY Tessilmare

BINOX RUB RAIL

UNLIMITED INNOVATION

The PVC base can be fitted onto the boat and the 9.8 feet S/S bar can be pressure fitted.



VERY QUICK INSTALLATION

Binox can be installed like our PVC fender profiles: cold fitted and in a very short time.

HIGH RESISTANCE

Light like a PVC fender profile, strong like a S/S fender profile.

UNMATCHED RESULT

S/S bars give a result never seen before. We suggest the use of our S/S joint caps and end caps for a better technical and aesthetic effect.



BINOX INSTALLATION



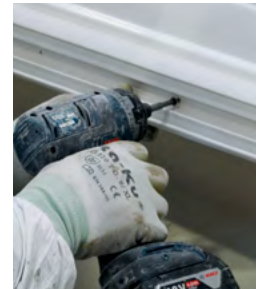
How to bend:

visit our video channel

www.youtube.com/tessilmare

1 APPLICATION OF PVC BASE

Attach the soft profile of the base against the entire length of the boat with screws. The screw head has to be flush with the PVC, without protrusions.



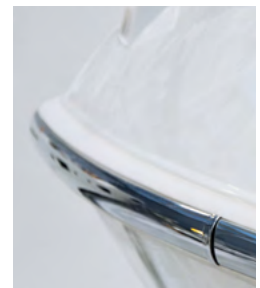
2 S/S BAR INSTALLATION

The stainless steel bars are pressure fitted, the operation will be faster using a small piece of PVC base and a hammer.



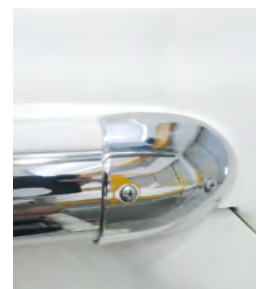
3 JOINT INSTALLATION

A joint cap is required in between each 9.8 feet bar.



4 CUTTING S/S AND PVC BASE AND END CAP INSTALLATION

Cut any loose PVC parts with a box cutter. As a final step, install the end-caps.



BINOX RUB RAIL



SPECIAL ORDER
to be shipped from Italy

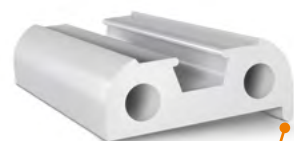
BINOX BY THE BAR



NEW

DESCRIPTION	CODE	SIZES	UNIT	
S/S Bar Binox 25	T130-230-125-8	1-5/8" x 8.5 ft	bar	
S/S Bar Binox 25	T130-230-125-3	1-5/8" x 9.8 ft	bar	
S/S Bar Binox 35	T130-230-135-8	1-3/8" x 8.5 ft	bar	
S/S Bar Binox 35	T130-230-135-3	1-3/8" x 9.8 ft	bar	
S/S Bar Binox 50	T130-230-150-8	2" x 8.5 ft	bar	
S/S Bar Binox 50	T130-230-150-3	2" x 9.8 ft	bar	
S/S Bar Binox 65	T130-230-165-8	2-1/2" x 8.5 ft	bar	
S/S Bar Binox 65	T130-230-165-3	2-1/2" x 9.8 ft	bar	

BINOX BY THE FOOT



NEW

Lip

DESCRIPTION	TYPE	CODE	HEIGHT		COLOR	UNIT
PVC Base for Binox 25	with lip	T130-230-040-L	1-5/8" 1"		-B = black -W = white	ft
PVC Base for Binox 25		T130-230-040	1-5/8" 1"		-B = black -W = white	ft
PVC Base for Binox 35	with lip	T130-230-050-L	2" 1-3/8"		-B = black -W = white	ft
PVC Base for Binox 35		T130-230-050	2" 1-3/8"		-B = black -W = white	ft
PVC Base for Binox 50	with lip	T130-230-070-L	2-3/4" 2"		-B = black -W = white	ft
PVC Base for Binox 50		T130-230-070	2-3/4" 2"		-B = black -W = white	ft
PVC Base for Binox 65		T130-230-090	3-1/2" 2"-1/2"		-B = black -W = white	ft

BINOX FITTINGS



binox

DESCRIPTION	CODE	UNIT
S/S Joint Cap for Binox 25	T130-500-125	each
S/S Joint Cap for Binox 35	T130-500-135	each
S/S Joint Cap for Binox 50	T130-500-150	each
S/S Joint Cap for Binox 65	T130-500-165	each
S/S End Cap for Binox 25	T130-500-510	each
S/S End Cap for Binox 35	T130-500-530	each
S/S End Cap for Binox 50	right + left T130-500-580	set



SPHÆRA RUB RAIL

THE NEW FRONTIER OF RUB RAILS

Sphæra is the revolutionary fender profile, made of stainless steel co-extruded with rigid and shockproof PVC.

Thanks to the innovative structural system, Sphæra is the first fender profile which combines high technical performance with superior aesthetics.

Sphæra is the unique, stylish and cutting-edge option for stainless rub rail.



EASILY ADAPTABLE TO THE HULL SHAPE



sphæra™

ULTRA LIGHT

ULTRA STRONG

EASILY BENDABLE

ITALIAN STYLE

U.S. PATENT

ENGINEERED BY Rezzonico Ranieri MADE BY Tessilmare



SPHÆRA RUB RAIL

3 INSTALLATION OPTIONS

Sphæra can be installed in three different ways allowing customization for the best aesthetic.



FITTED ALONE



FITTED WITH A PVC SLIM BASE



FITTED WITH A PVC STRONG BASE

REDUCE STOCK AND COSTS BY 70%

316 L stainless steel

Easy to bend and install

Reduced waste

Exceptionally strong

Crushproof

Beautiful design

Lightweight

Competitive price

Easy to repair and refit



Bavaria Yachts



SPHÆRA RUB RAIL

CORE

The stainless steel profile is easily adaptable to the hull shape thanks to the Duralene core.

Its patented process prevents deformations and allows bending on difficult angles with a minimal effort.



BASE

The PVC base is supplied in custom-cut reels, thus avoiding unsightly joints, breaks, and misalignment.



JOINT & END CAP

The joint caps keep the bars perfectly aligned, thereby avoiding multiple and unnecessary drillings.

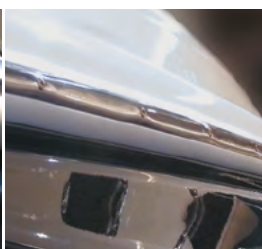
The end caps provide the finishing touch for a streamlined finish.



TRADITIONAL SYSTEM ISSUES



bending deformation



profile flattening



bars junction

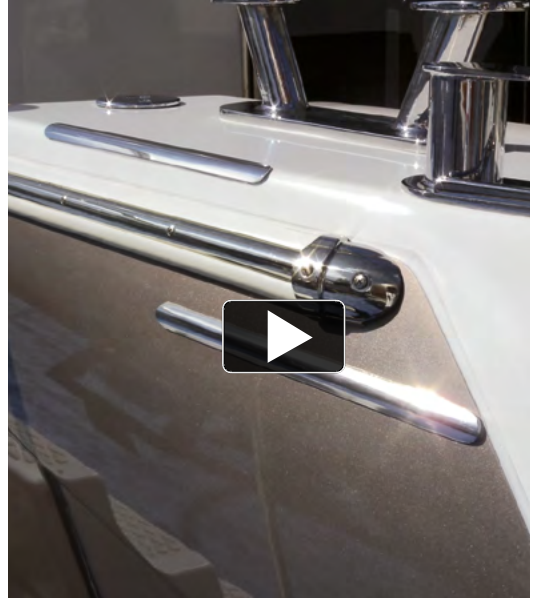


profile misalignment



multiple drillings

SPHÆRA INSTALLATION



How to bend:

visit our video channel
www.youtube.com/tessilmare

1 PVC BASE INSTALLATION

The PVC base is placed on the boat with painters tape. The base can be cut of the right boat size to avoid any waste or interruption.



2 S/S BAR INSTALLATION

Steel bars are pre-drilled and are secured together with the base with steel screws. Bow and stern bends are created directly on the boat, that works as a bending template.

We recommend the use of a wood template only in installations requiring very sharp and difficult boat side bends.



3 JOINT AND END CAPS INSTALLATION

Well-designed and functional joint caps successfully cover the gaps at junctures and keep the bars perfectly aligned to avoid an unattractive two screw installation.

Stainless steel end caps give an elegant finishing touch.



SPHÆRA RUB RAIL

NEW!



UPS
SHIPPABLE



SPECIAL ORDER
to be shipped from Italy

SPHÆRA BY THE BAR



DESCRIPTION	CODE	SIZES	UNIT
S/S Bar Sphæra 25	T130-130-125-3	1" x 9.8 ft	bar
S/S Bar Sphæra 25	T130-130-125-8	1" x 8.5 ft	bar
S/S Bar Sphæra 35	T130-130-135-3	1-3/8" x 9.8 ft	bar
S/S Bar Sphæra 35	T130-130-135-8	1-3/8" x 8.5 ft	bar
S/S Bar Sphæra 50	T130-130-150-3	2" x 9.8 ft	bar
S/S Bar Sphæra 65	T130-130-165-3	2-1/2" x 9.8 ft	bar

SPHÆRA BY THE FOOT



DESCRIPTION	CODE	HEIGHT	MINIMUM BENDING RAD	COLOR	UNIT
PVC Base for Sphæra 25	T130-130-040	1-5/8"	1-1/8"	--B = black -W = white	ft
PVC Base for Sphæra 35	T130-130-050	2"	2-7/8"	--B = black -W = white	ft
PVC Base for Sphæra 50	T130-130-070	2-3/4"	3-7/8"	--B = black -W = white	ft
PVC Base for Sphæra 65	T130-130-090	3-1/2"	3-7/8"	--B = black -W = white	ft

SPHÆRA SLIM



DESCRIPTION	CODE	COLOR	UNIT
PVC Slim Base for Sphæra 25	T130-130-039	--B = black -W = white	ft
PVC Slim Base for Sphæra 35	T130-130-049	--B = black -W = white	ft
PVC Slim Base for Sphæra 50	T130-130-069	--B = black -W = white	ft
PVC Slim Base for Sphæra 65	T130-130-089	--B = black -W = white	ft

SPHÆRA FITTINGS



DESCRIPTION	CODE	UNIT
S/S Joint Cap for Sphæra 25	T130-500-125	each
S/S Joint Cap for Sphæra 35	T130-500-135	each
S/S Joint Cap for Sphæra 50	T130-500-150	each
S/S Joint Cap for Sphæra 65	T130-500-165	each
S/S End Cap for Sphæra 25	T130-500-625	mounted without PVC BASE
S/S End Cap for Sphæra 35	T130-500-635	mounted without PVC BASE
S/S End Cap for Sphæra 50	T130-500-650	mounted without PVC BASE
S/S End Cap for Sphæra 65	T130-500-665	mounted without PVC BASE
Kit End Cap for Sphæra 25	T130-500-725	mounted with PVC BASE
Kit End Cap for Sphæra 35	T130-500-735	mounted with PVC BASE
Kit End Cap for Sphæra 50	T130-500-750	mounted with PVC BASE
Kit End Cap for Sphæra 65	T130-500-765	mounted with PVC BASE

RADIAL RUB RAIL

TIME AND LABOR SAVINGS

Fast and easy to install, Radial is the PVC fender profile without rivets. It's different from all other profiles on the market, and can be cold fitted in just a few steps. The soft insert is supplied in custom-cut reels, to avoid waste and unsightly seams. Easy to install with seamless, Italian style.



ProGlide Boats

COLD FITTING IN JUST A FEW STEPS
NO NEED TO PRE-HEAT



RADIAL™

FLEXIBLE COLD-FIT RUB RAIL PROVIDES SEAMLESS FINISH

U.S. PATENT

ENGINEERED BY Rezzonico Massimo MADE BY Tessilmare



Egret Boats



Saxdor Yachts

RADIAL RUB RAIL

ADVANTAGE

Seamless installation

Easy to repair or refit

Quick setup

No pre-heating necessary with exception of 65 - 80 - 100 sizes, please refer to the user manual

Saving 2/3 of assembling time

BENDING

Extremely flexible

Easy to bend

Perfect hull adhesion

JOINT & END CAP

Convenient PVC and elegant stainless steel joint caps and end caps give the finishing touch to the boat.



Seafaring Yachts



Quicksilver Boats



Absolute Yachts



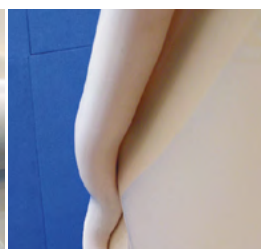
TRADITIONAL SYSTEM ISSUES



imperfect junctions



bending deformation



lack of hull adhesion



unsightly bolting

RADIAL INSTALLATION



How to bend:

visit our video channel

www.youtube.com/tessilmare

1 RIGID TRACK INSTALLATION

Radial cannot be fitted on flat surfaces.*

The track can be screwed or riveted without heating or any special tools. The installation is quick and easy with the track which bends in all boat directions.

**Refer to the Bino products for flat surfaces.*

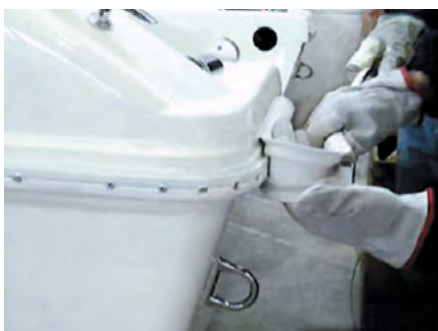


2 SOFT INSERT INSTALLATION

The soft insert simply rolls on the installed rigid track.

No pre-heating or special tools necessary with exception of 65 - 80 - 100 sizes, please refer to the user manual.

Installation is seamless avoiding unsightly joints or waste.



3 END CAP INSTALLATION

Once the soft insert is installed, simply cut and screw on the PVC or stainless steel end cap.





SPECIAL ORDER
to be shipped from Italy

RADIAL RUB RAIL

KITS OF RADIAL

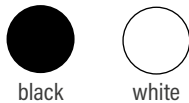


DESCRIPTION	CODE	HEIGHT	COLOR	UNIT
KIT Radial 30	T130-141-004	1-1/8"	-B1 = black -W1 = white	kit
The Kit includes: 46' soft + 46' semirigid tracks + 2 PVC end caps + 1 PVC joint cap				
KIT Radial 40	T130-140-110	1-5/8"	-B1 = black -W1 = white	kit
The Kit includes: 52' soft + 52' semirigid tracks + 2 PVC end caps + 1 PVC joint cap				
KIT Radial 52	T130-140-115	2-1/8"	-B1 = black -W1 = white	kit
The Kit includes: 72' soft + semirigid tracks + 2 PVC end caps + 1 PVC joint cap				

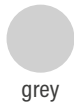
RADIAL BY THE FOOT



STANDARD COLORS



COLORS BY REQUEST



DESCRIPTION	CODE	HEIGHT	MINIMUM BENDING RAD	COLOR	UNIT
Rigid Track Radial 30	T130-141-006-2		2"		bar 6.5 ft
Soft Insert Radial 30	T130-141-007	1-1/8"		-B = black -W = white	ft
Rigid Track Radial 40	T130-141-011-2		2-3/8"		bar 6.5 ft
Soft Insert Radial 40	T130-141-012	1-5/8"		-B = black -W = white	ft
Rigid Track Radial 52	T130-141-016-2		2-3/4"		bar 6.5 ft
Soft Insert Radial 52	T130-141-017	2-1/8"		-B = black -W = white	ft
Rigid Track Radial 65	T130-141-016-2		3-1/8"		bar 6.5 ft
Soft Insert Radial 65	T130-141-022	2-1/2"		-B = black -W = white	ft
Rigid Track Radial 80	T130-141-026-2		3-7/8"		bar 6.5 ft
Soft Insert Radial 80	T130-141-027	3-1/8"		-B = black -W = white	ft



RADIAL FITTINGS



DESCRIPTION	CODE	UNIT
S/S Joint Cap Radial 40	T130-500-610	each
S/S Joint Cap Radial 52	T130-500-620	each
S/S Joint Cap Radial 65	T130-500-630	each
S/S Joint Cap Radial 80	T130-500-640	each
S/S End Cap Radial 30	T130-500-500	each
S/S End Cap Radial 40	T130-500-510	each
S/S End Cap Radial 52	T130-500-520	each
S/S End Cap Radial 65	T130-500-530	each
S/S End Cap Radial 80	T130-500-580	right + left

set



BINO RUB RAIL

STRONG BUT LIGHTWEIGHT

Bino is Tessilmare's solution to installation on a flat surface.

An innovative design gives this two-piece fender a high protection against shock and makes it suitable for docks, piers, military boats, workboats and pleasure boats.



Suitable for:

Yachts

Tenders

Workboats

Military boats

Dock protection

Pier protection



bino90&65

Bino is supplied in custom-cut reels, to avoid junctions.

It can be easily installed: the profile base is fitted with the aid of a pre-drilled steel bar, the profile top is set simply by pressure.

PATENTED

ENGINEERED BY Rezzonico Massimo MADE BY Tessilmare



BINO40 RUB RAIL

AS STRONG AS BINO 90 & 65

The uniqueness of this product is that it can be adapted to very complex curves, with both negative and positive acute radius, the product does not need any pre-heating so the assembly is fast. Bino 40 is perfect for installation on flat surfaces.



Silver Back Marine

Suitable for:

Yachts

Tenders

Workboats

Military boats

Dock protection

Pier protection



bino40



The modularity of Bino 40 allows you to replace one of the two parts over time, separately.
The product fits cold as its flexibility is very high.

PATENTED

ENGINEERED BY Rezzonico Ranieri MADE BY Tessilmare



BINO90&65

INSTALLATION

1 PREPARATION OF THE PROFILE

The fender profiles Bino 90 and Bino 65 consist of 2 modules and a fixing pre-drilled bar in stainless steel.

Plan the installation by laying the profile either on the boat or around the boat on the ground. This planning step will insure a smoother and easier installation overall.

2 FIXING THE TRACK THROUGH THE STEEL BAR

Drill holes in the boat using the same holes of the bars as a guide.



3 APPLICATION OF THE TOP PROFILE

Apply the closing profile by pressing with a rubber hammer.



4 FINISH WITH THE END-CAPS



BINO40

INSTALLATION

1 PREPARATION OF THE PROFILE

The Bino 40 profile consists of 2 modules, one base and one top insert which covers the fixing screws.

Thanks to its flexibility it can be cold fit easily. Plan the installation by laying the profile either on the boat or around the boat on the ground. This planning step will insure a smoother and easier installation overall.

2 FIXING THE BASE PROFILE THROUGH SCREWS AND RIVETS

Drill and screw the base profile directly to the boat.



3 APPLICATION OF THE TOP PROFILE

Install the top profile by pressing it with a rubber hammer.



4 FINISH WITH THE END-CAPS



BINO



SPECIAL ORDER
to be shipped from Italy

BINO 90 and 65



DESCRIPTION	CODE	HEIGHT	COLOR	UNIT
Bino 90 series 2 pcs	T130-115-010-B	3-1/2"	black	ft
Bino 90 series 2 pcs	T130-115-010-W	3-1/2"	white	ft
Bino 65 series 2 pcs	T130-115-005-B	2-1/2"	black	ft
Bino 65 series 2 pcs	T130-115-005-W	2-1/2"	white	ft
Steel Bar for Bino*	T130-110-165-1			bar 3.28 ft.
*Stainless installation bar sold separately.				
Bino 40 series 2 pcs	T130-115-001-B	1-1/2"	black	ft
Bino 40 series 2 pcs	T130-115-001-W	1-1/2"	white	ft



BINO 40



BINO 90 and 65 FITTINGS



DESCRIPTION	CODE	COLOR
Bino 90 PVC End Cap	T130-500-095-B	-B = black
Bino 90 PVC End Cap	T130-500-095-W	-W = white
Bino 65 PVC End Cap	T130-500-092-B	-B = black
Bino 65 PVC End Cap	T130-500-092-W	-W = white



BINO 40 FITTINGS



DESCRIPTION	CODE
Bino 40 S/S Joint Cap	T130-500-610
Bino 40 S/S End Cap	T130-500-510

bino90 bino65



bino40



How to bend:

visit our video channel
www.youtube.com/tessilmare

QBE RUB RAIL

BRAND-NEW RUB RAIL

We refined the square shaped contemporary design of our Qbe fender before we got it right. The result is a unique adaptable fender that works in any setting for both boxed and sandwich junctions boats: heavy duty shock absorbing system for ultimate protection makes Qbe ideal for recreational, commercial and military boats as well.



Suitable for:

Recreational
Commercial

Military boats
Workboats

NEW



Qbe

It fits both boxed and sandwich junctions!
The dual-use rub rail helps you drastically reduce stock and standardize your design. Excellent results in heavy duty conditions, thanks to the robust supporting structure and the steel bar ensuring the fender is constantly and firmly held.

PATENT PENDING

ENGINEERED BY Rezzonico Ranieri MADE BY Tessilmare

QBE RUB RAIL

THE MATERIAL

Qbe top notch PVC material for marine use prevents annoying marks on any surfaces. Qbe flexible components enable to follow the shape of the boat. That's why the well-fitting, never failing Qbe profile will render almost all others redundant.



THE BENEFITS

Fast setting up: less time and lower installation costs thanks to the limited number of components and simplicity of fixing.

Available in custom-cut reels to cut down on waste thus reducing costs.

Reduced chances to accidentally find hull-deck joining screws during installation.

The flowing harmony of its attractive aesthetics, minimalism and technology make Qbe (patent pending) a unique product offering TESSILMARE uncompromising quality and demonstrated durability.



QBE RUB RAIL



SPECIAL ORDER
to be shipped from Italy

QBE 90



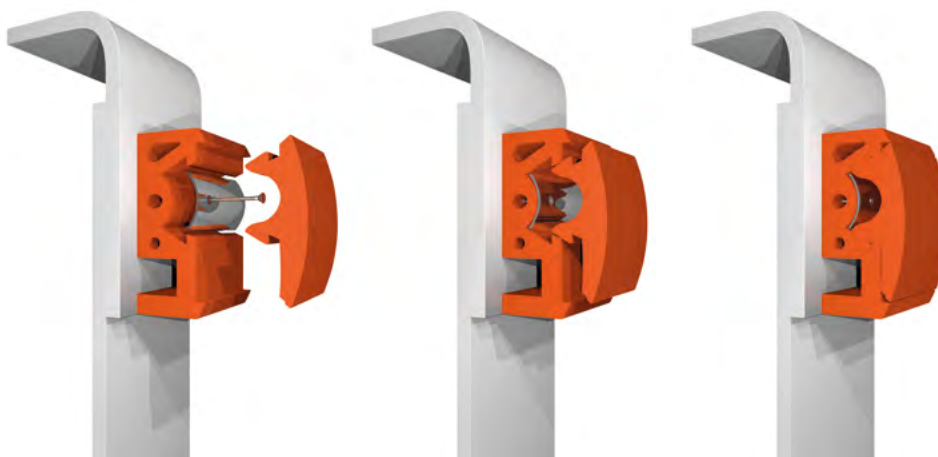
DESCRIPTION	CODE	HEIGHT	MINIMUM BENDING RAD	COLOR	UNIT
QBE 90 set of 2 pcs	T130-120-010	3-1/2"	3-7/8"	-B = black -W = white	ft
S/S Bar 2 mts. long	T130-110-165-1				bar 3.28 ft.

QBE 90 FITTINGS

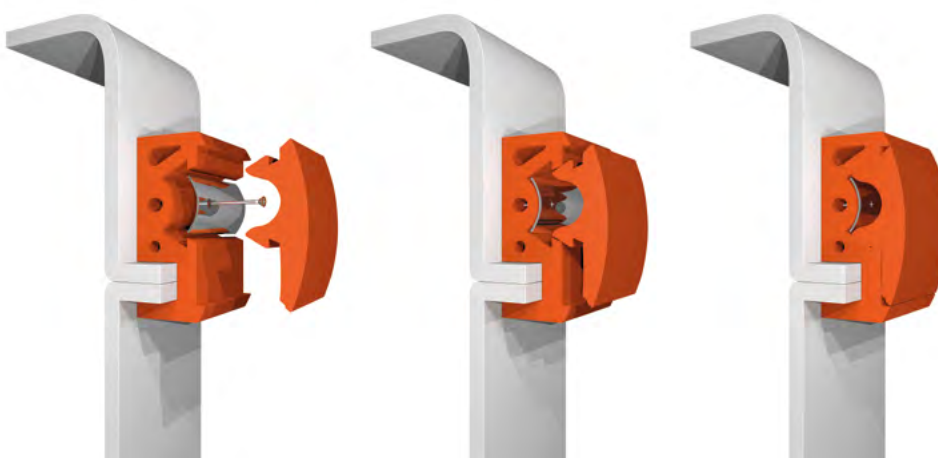


DESCRIPTION	CODE	HEIGHT	MINIMUM BENDING RAD	COLOR	UNIT
QBE 90 PVC End cap	T130-500-103			-B = black -W = white	

Boxed junctions



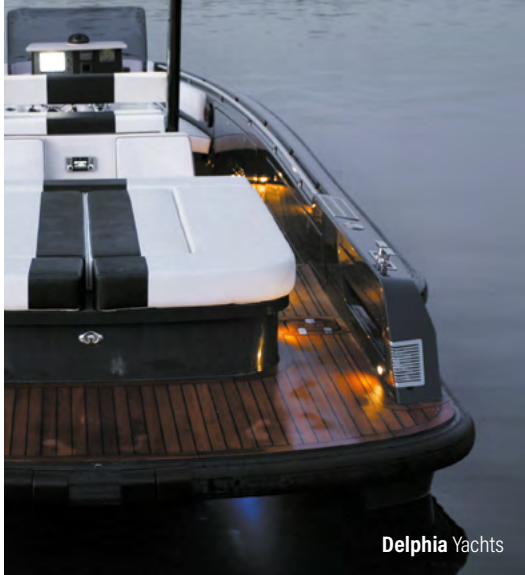
Sandwich junctions



BUMPER RUB RAIL

STRONG BUT LIGHTWEIGHT

Bumper is the first fender profile that represents the perfect alliance between lightweight and durability. Developed with a triple structure of PVC, it has wide inner air gaps which are designed to create absorption of impact never achieved before.



Delphia Yachts

Suitable for:

- Yachts
Tenders
Workboats
- Military boats
Dock protection
Pier protection



bumper

Bumper is supplied in custom-cut reels, to avoid junctions. It can be easily installed, thanks to its own modularity: both base profiles are fixed to the hull through a stainless steel bar, while the top profile can be fitted by pressure.



PATENTED

ENGINEERED BY Rezzonico Massimo MADE BY Tessilmare



SPECIAL ORDER
to be shipped from Italy

DESCRIPTION	CODE	HEIGHT	COLOR	UNIT
Bumper 125 series 3 pcs	T130-110-125-B	4-7/8"	black	ft
Steel Bar for Bumper	T130-110-165-1			bar 3.28 ft.
Bumper 125 PVC End Cap	T130-500-097-B			

BUMPER INSTALLATION

1 PREPARATION OF THE PROFILE

The fender profiles Bumper consist of 3 modules and a fixing pre-drilled bar in stainless steel. Plan the installation by laying the profile either on the boat or around the boat on the ground. This planning step will insure a smoother and easier installation overall.



How to bend:

visit our video channel
www.youtube.com/tessilmare

2 FIXING THE STEEL TRACK

Place the fender profile and the fixing bar together and mark the correct position of the steel bar with a felt-tip pen. Drill holes in the boat using the same holes of the bars as a guide, point the track screws over the entire circumference boat.



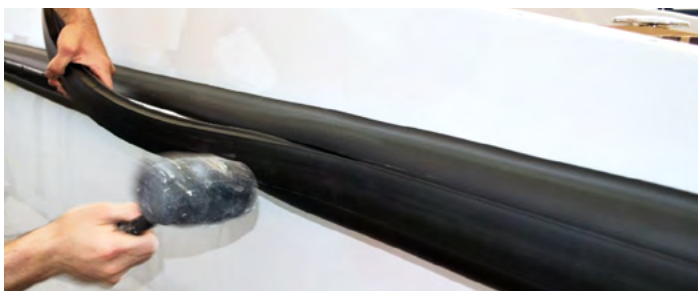
3 APPLICATION OF THE BASE MODULES

Apply one of the two base modules, partially screwing down the screws until the profile stays in place. Apply the second base module, then tighten the screws until completely securing the two base modules. The modules have to be placed perfectly under the steel track.



4 APPLICATION OF THE TOP PROFILE

Apply the closing profile by pressing with a rubber hammer.



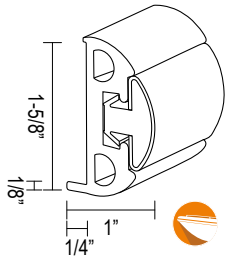
5 FINISH WITH THE END CAPS



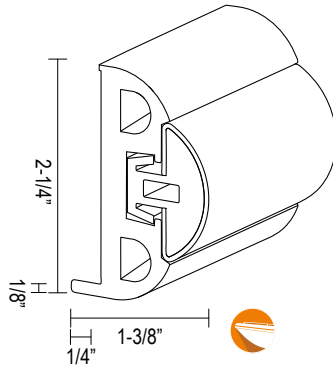
BINOX SIZES

For installation with
DECK JOINT

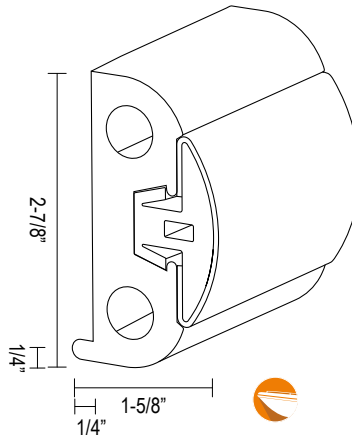
For installation on
FLAT SURFACES



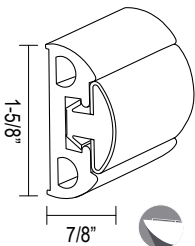
BINOX 25
with lip



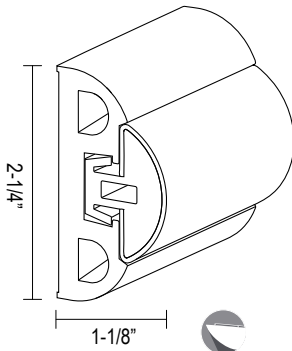
BINOX 35
with lip



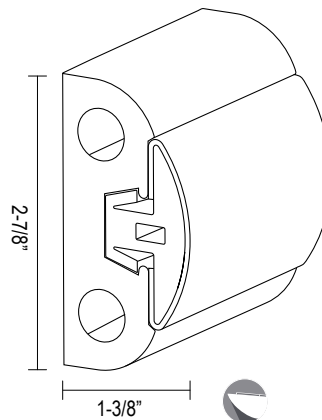
BINOX 50
with lip



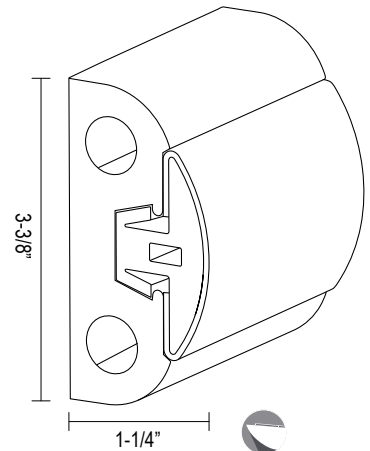
BINOX 25



BINOX 35

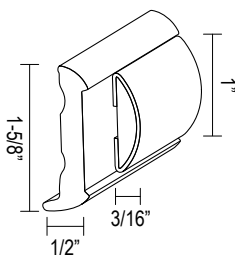


BINOX 50

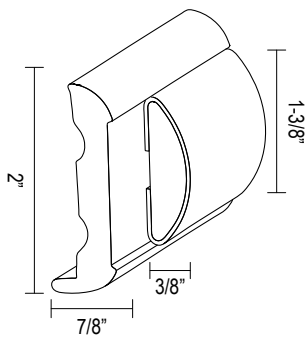


BINOX 65

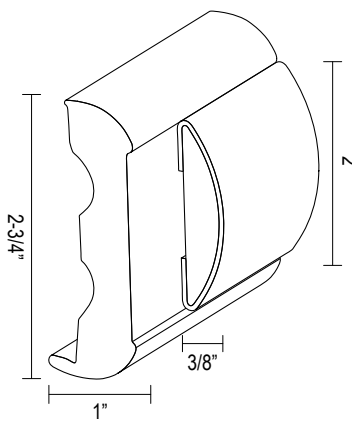
SPHÆRA SIZES



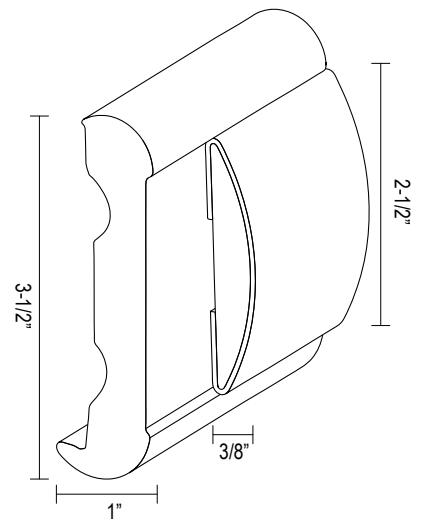
SPHÆRA 25



SPHÆRA 35

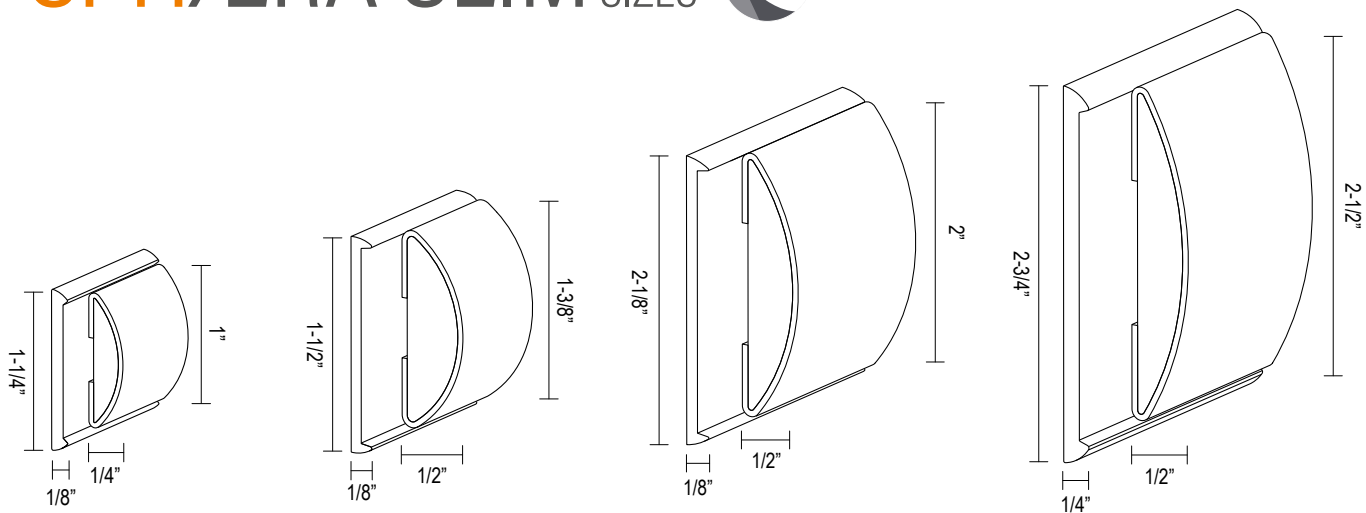


SPHÆRA 50



SPHÆRA 65

SPHÆRA SLIM SIZES



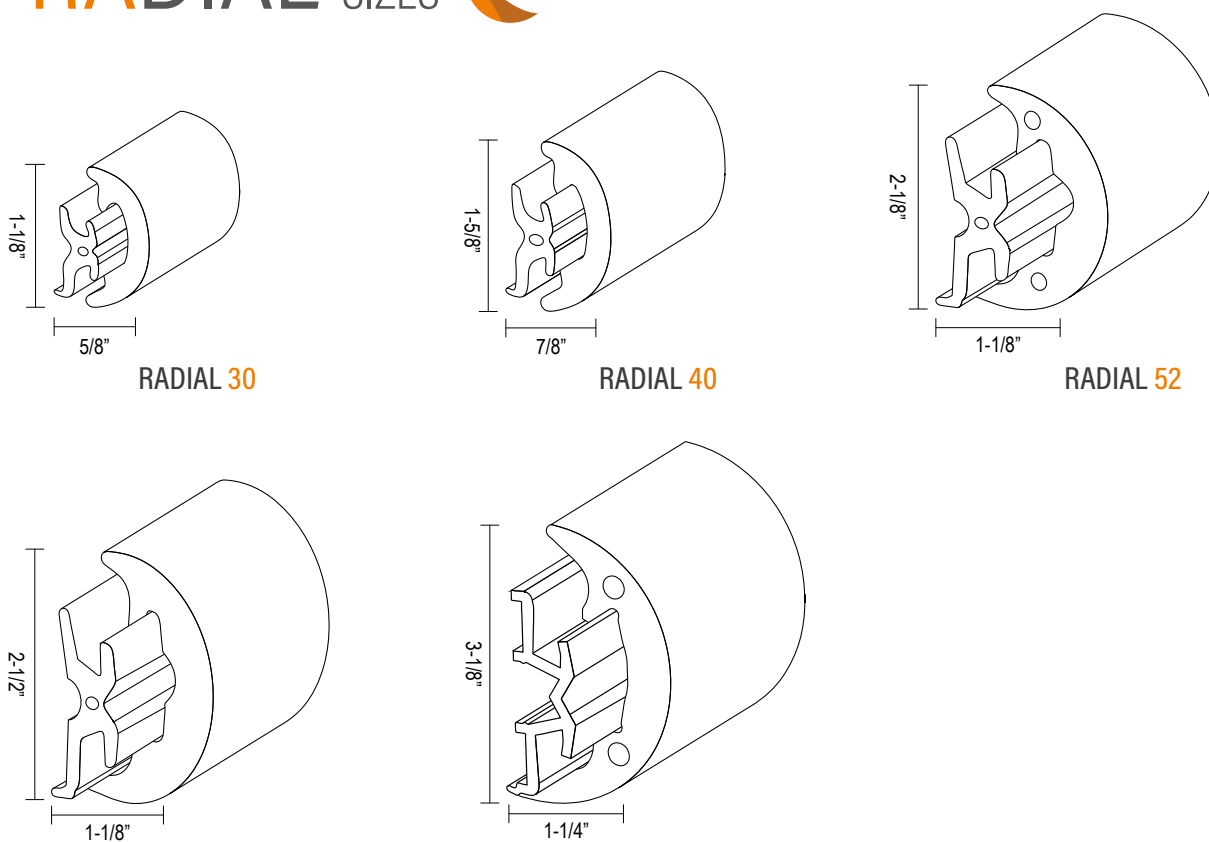
SPHÆRA SLIM 25

SPHÆRA SLIM 35

SPHÆRA SLIM 50

SPHÆRA SLIM 65

RADIAL SIZES



RADIAL 30

RADIAL 40

RADIAL 52

RADIAL 65

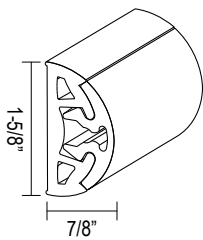
RADIAL 80

BINO SIZES

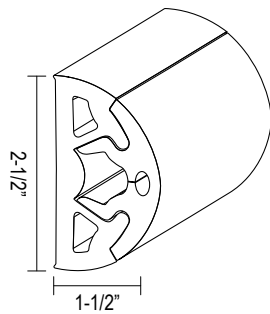
For installation with
DECK JOINT

For installation on
FLAT SURFACES

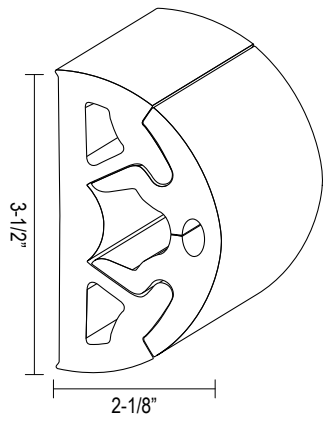
For installation with
SANDWICH JUNCTIONS



BINO 40



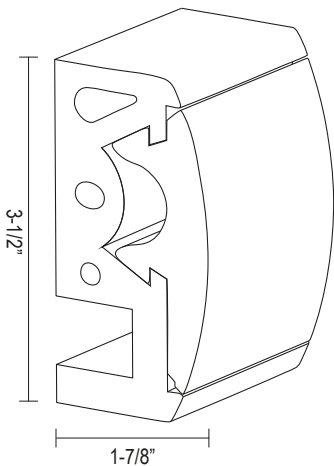
BINO 65



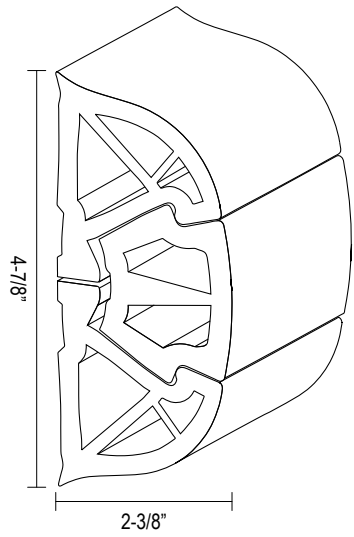
BINO 90

QBE SIZES

BUMPER SIZES



QBE 90



BUMPER 125

binox
PATENTED

sphæraTM
U.S. PATENT

BADIALTM
U.S. PATENT

bino
PATENTED

Qbe
PATENT PENDING

bumper
PATENTED

MATE
USA

is a partnership between

MARCO **TESSILMARE**

MATE USA, LLC
3251-A S.W. 13th Dr.
Deerfield Beach, FL 33442
Phone 954-463-5757

mate-usa.com
rubrails-tessilmare.com
info@mate-usa.com
orders@mate-usa.com